



## Mouse anti Renal Cell Carcinoma (RCC, gp200) Monoclonal Antibody

**Alternative Name(s):** carbonic dehydratase; RCC-associated protein G250; pMW1; CA-IX; P54/58N; membrane antigen MN; carbonate dehydratase IX; RCC-associated antigen G250; renal cell carcinoma-associated antigen G250; carbonic anhydrase IX

### Order Information

- **Description:** Renal Cell Carcinoma (RCC, gp200)
- **Catalogue:** 606-220
- **Lot:** See label
- **Size:** 100ug/200ul
- **Host:** Mouse
- **Clone:** PN-15
- **Application:** IHC(P), FC
- **Reactivity:** Hu

### **ANTIGEN PREPARATION**

Enriched cell membrane of renal cell carcinoma RCC, gp200)

### **BACKGROUND**

In normal kidney, gp200 is localized along the brush border of the pars convoluta and pars recta segments of the proximal tubule, as well as focally along the luminal surface of Bowman's capsule adjoining the outgoing proximal tubule. Of other normal tissues examined, the gp200 is also localized along the luminal surfaces of breast lobules and ducts, the luminal surface of the epididymal tubular epithelium, within the cytoplasm of parathyroid parenchymal cells, and focally within the colloid of thyroid follicles. Thirty-one other normal tissues do not express similar or cross-reacting antigens. Reportedly, gp200 is expressed by 93% of primary and 84% of metastatic renal cell carcinomas. This antibody shows no significant cross-reactivity with other carbohydrate determinants, such as the Lewis blood group antigens, epithelial membrane antigen, HMFG, and AB blood group antigens. It may be a useful reagent in the investigations of carcinomas of proximal nephrogenic differentiation especially those showing tubular differentiation.

### **PURIFICATION**

The mouse IgG is purified by Protein A-Affinity Chromatography according to Isotyping

### **FORMULATION**

This affinity purified antibody is supplied in sterile Phosphatebuffered saline (pH7.2) containing antibody stabilizer

### **SPECIFICITY**

This antibody recognizes Renal Cell Carcinoma (RCC, gp200).

### **STORAGE**

The antibodies are stable for 24 months from date of receipt when stored at -20oC to -70oC. The antibodies can be stored at 2oC-8oC for three month without detectable loss of activity. Avoid repeated freezing-thawing cycles.

### **APPLICATIONS/SUGGESTED WORKING DILUTIONS\***

- Western Blot: 0.1-1 µg/ml
- ELISA: 0.01-0.1 µg/ml
- Immunoprecipitation: 2-5 µg/ml
- IHC: 2-10 µg/ml
- Flow cytometry: Not tested
- Molecular Weight: 116.0
- Positive Control: Kidney Tissue

### **FOR RESEARCH USE ONLY.**

AbboMax, Inc 2528 Qume Drive, Suite 8, San Jose, California 95131, USA  
1 408-573-1898 (Tel). 1 408-573-1858 (Fax). [www.abbomax.com](http://www.abbomax.com) [info@abbomax.com](mailto:info@abbomax.com)



- Cellular Location: Cell Membrane

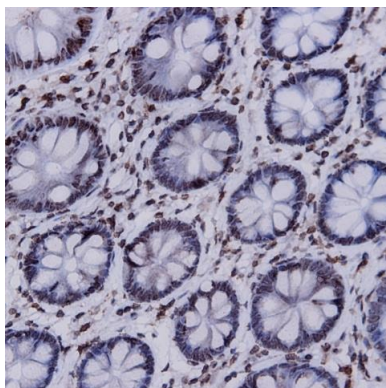
\*Optimal dilutions should be determined by researchers for the specific applications.

**FOR RESEARCH USE ONLY.**

AbboMax, Inc 2528 Qume Drive, Suite 8, San Jose, California 95131, USA  
1 408-573-1898 (Tel). 1 408-573-1858 (Fax). [www.abbomax.com](http://www.abbomax.com) [info@abbomax.com](mailto:info@abbomax.com)



## DATA ATTACHMENTS



Immunohistochemistry: Human kidney (FFPE) stained with Mouse anti-RCCgp200 (Renal Cell Carcinoma) (Cat#606-220 ) at 1:200 for 10 min @ RT. Staining of formalin-fixed tissue requires boiling tissue sections in 10 mM Citrate Buffer, pH 6.0 for 10 min followed by cooling at RT for 20 min.

## REFERENCES

### FOR RESEARCH USE ONLY.

AbboMax, Inc 2528 Qume Drive, Suite 8, San Jose, California 95131, USA  
1 408-573-1898 (Tel). 1 408-573-1858 (Fax). [www.abbomax.com](http://www.abbomax.com) [info@abbomax.com](mailto:info@abbomax.com)